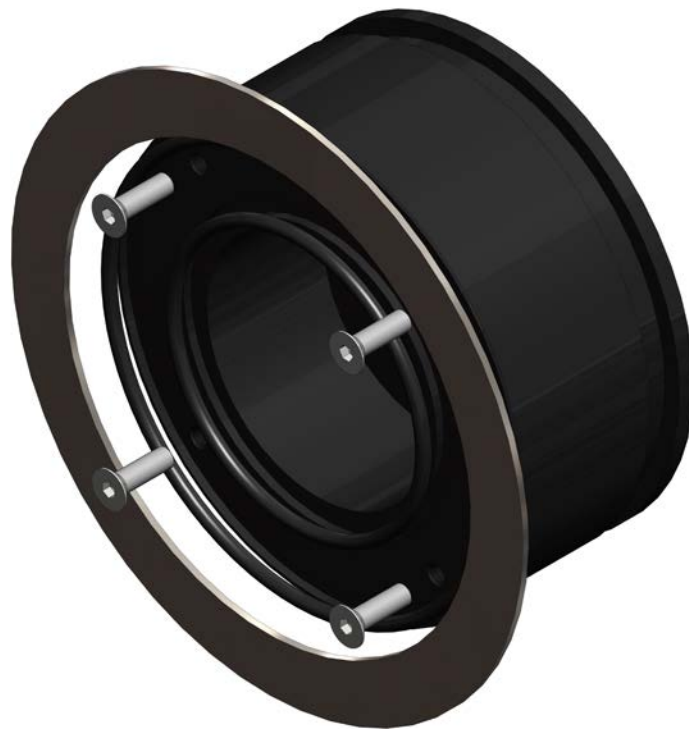

LCPN

CONCRETE POOL NICHE

0640

1280

36240



Installation Instructions

ASTEL
LIGHTING

PREFACE

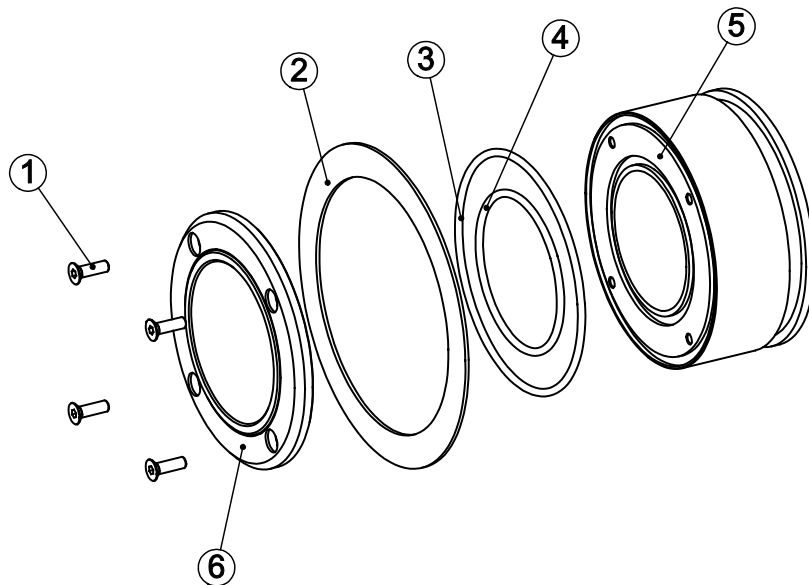
The Concrete Pool Niche LCPN series is designed to install the METEOR series of underwater lights on the ceramic tile-finish pools.

The LCPN body is made of black UHMW polyethylene. The O-rings and stainless steel screws together with stainless steel flange enable reliable waterproof and esthetical installation.

FEATURES

- For using with METEOR series
- Black UHMW-PE Body
- Stainless Steel Screws and Flange
- Simple Installation

COMPONENTS



(1) SCREWS

Stainless steel screws for underwater light fixing.

(2) FLANGE

Stainless steel flange.

(3) O-RING

Outer O-ring.

(4) O-RING

Inner O-ring.

(5) UHMW-PE BODY

Polyethylene body of LCPN niche with fixing holes and sealing grooves.

(6) UNDERWATER LIGHT

The METEOR series of underwater lights.

INSTALLATION

The LCPN kit consists of the following components:

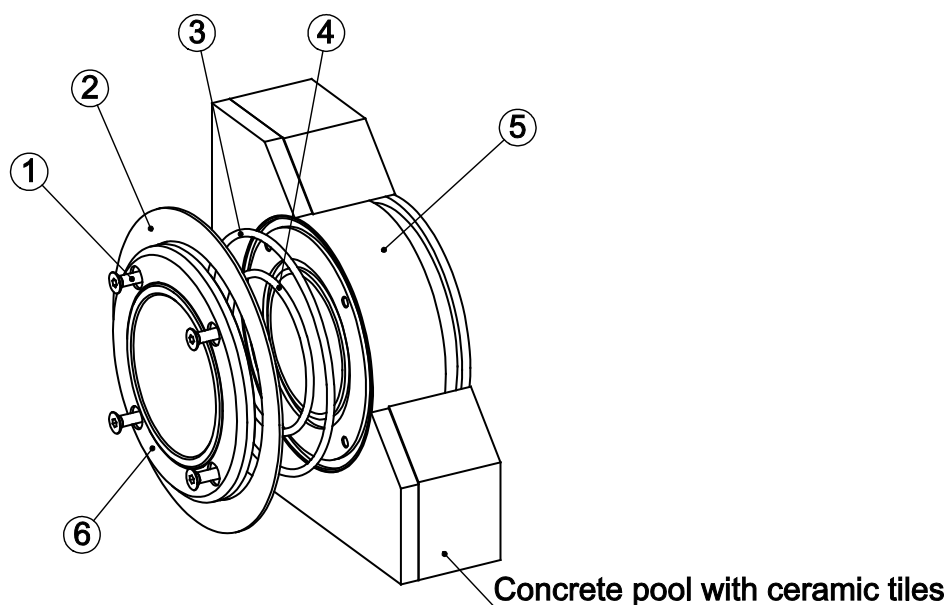
- UHMW-PE body
- 4 x fixing screw M6 X 20
- 2 x O-ring
- Stainless steel flange
- Installation instructions

Fixing and sealing

The LCPN niche has to be mounted inside the concrete wall of the pool with ceramic tile finish under water line.

The METEOR series of underwater lights has to be fixed to the LCPN niche with 4 screws. The sealing is enabled by the help of two O-rings which have to be inserted properly.

The installation has to be realized by a qualified personnel.



Note:

- ***Do not overtighten the screws as this can result in underwater pool light or niche damage.***

TECHNICAL SPECIFICATIONS

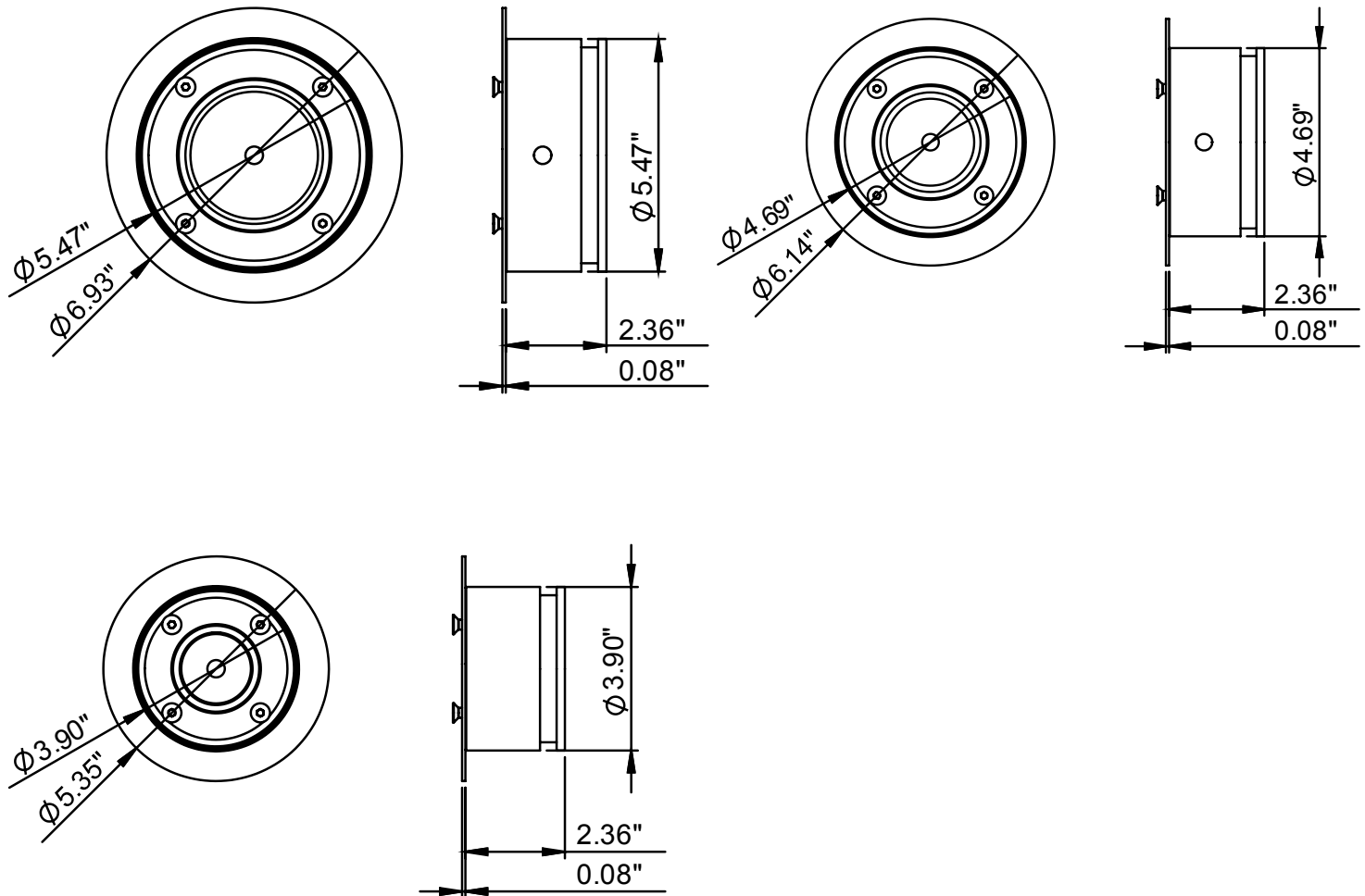


Material
Dimensions

UHMW-PE
Ø3.90" x 2.36" (LCPN 0640)
Ø4.69" x 2.36" (LCPN 1280)
Ø5.47" x 2.36" (LCPN 36240)

Weight

1.1 lbs (LCPN 0640)
1.5 lbs (LCPN 1280)
2.0 lbs (LCPN 36240)



Design and specifications subject to change without notice.

ASTEL d.o.o., Dutovlje 138, 6221 Dutovlje, Slovenia

Tel: +386 5 7310771, +386 5 7310772

Fax: +386 5 7310789

E-mail: info@astel-lighting.com

Web: www.astel-lighting.com