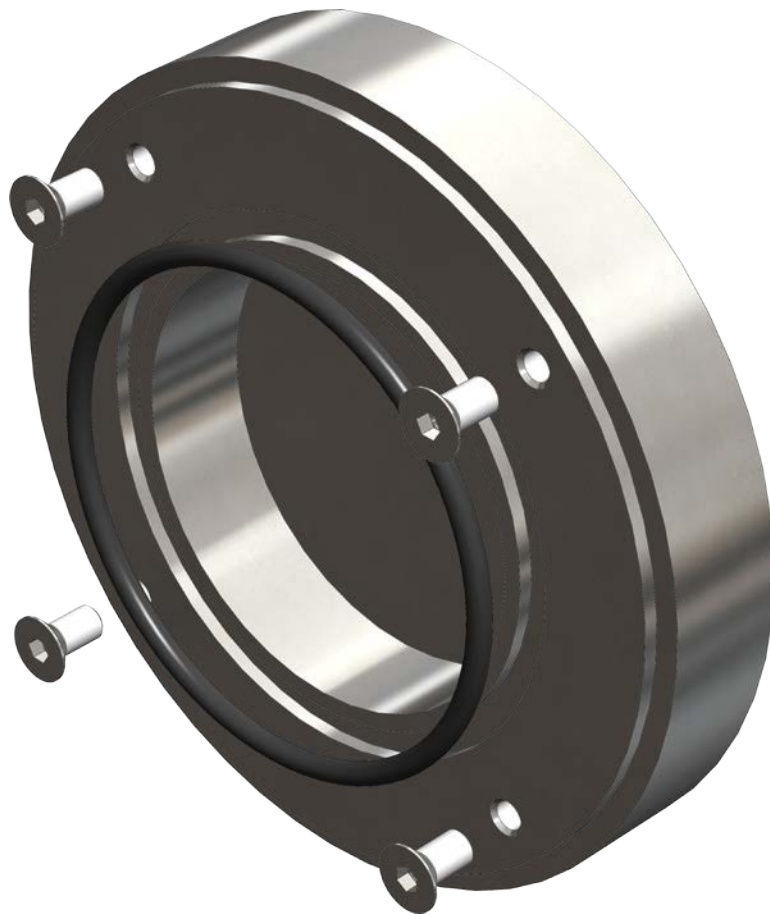

LWMN

WELD MOUNT NICHE
0640
1280
36240



Installation Instructions

ASTEL
LIGHTING

PREFACE

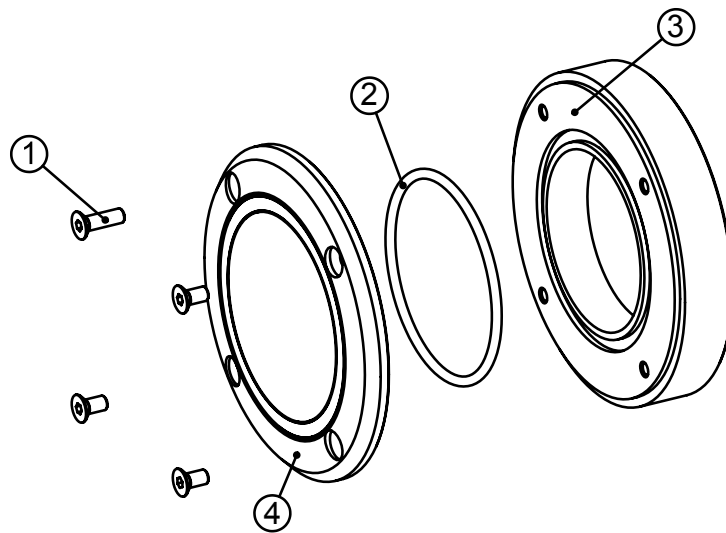
The Weld Mount Niche LWMN series is designed for weld-mount installation of the METEOR series of underwater lights.

The LWMN body is made of stainless steel. The O-ring and stainless steel screws enable reliable waterproof and esthetical installation.

FEATURES

- For using with METEOR series
- Stainless Steel body
- Stainless Steel Screws
- For Weld-Mount Installation

COMPONENTS



(1) SCREWS

Stainless steel screws for underwater light fixing.

(2) O-RING

O-ring.

(3) STAINLESS STEEL BODY

Stainless steel body with fixing holes and sealing groove.

(4) UNDERWATER LIGHT

The METEOR series of underwater lights.

INSTALLATION

The LWMN kit consists of the following components:

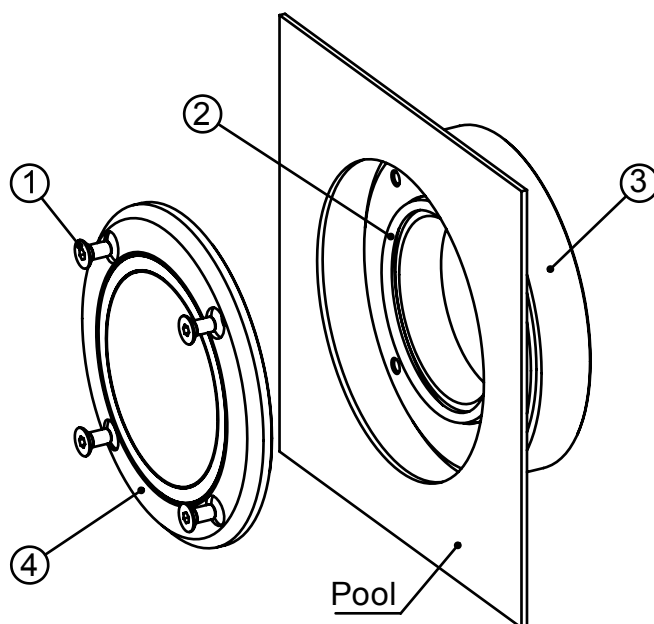
- Stainless steel body
- 4 x fixing screw M6 X 12(20)
- O-ring
- Installation instructions

Fixing and sealing

The LWMN niche has to be welded to the pool stainless steel wall under water line.

The METEOR series of underwater lights has to be fixed to the LWMN niche with 4 screws. The sealing is enabled by the help of O-ring which have to be inserted properly.

The installation has to be realized by a qualified personnel.



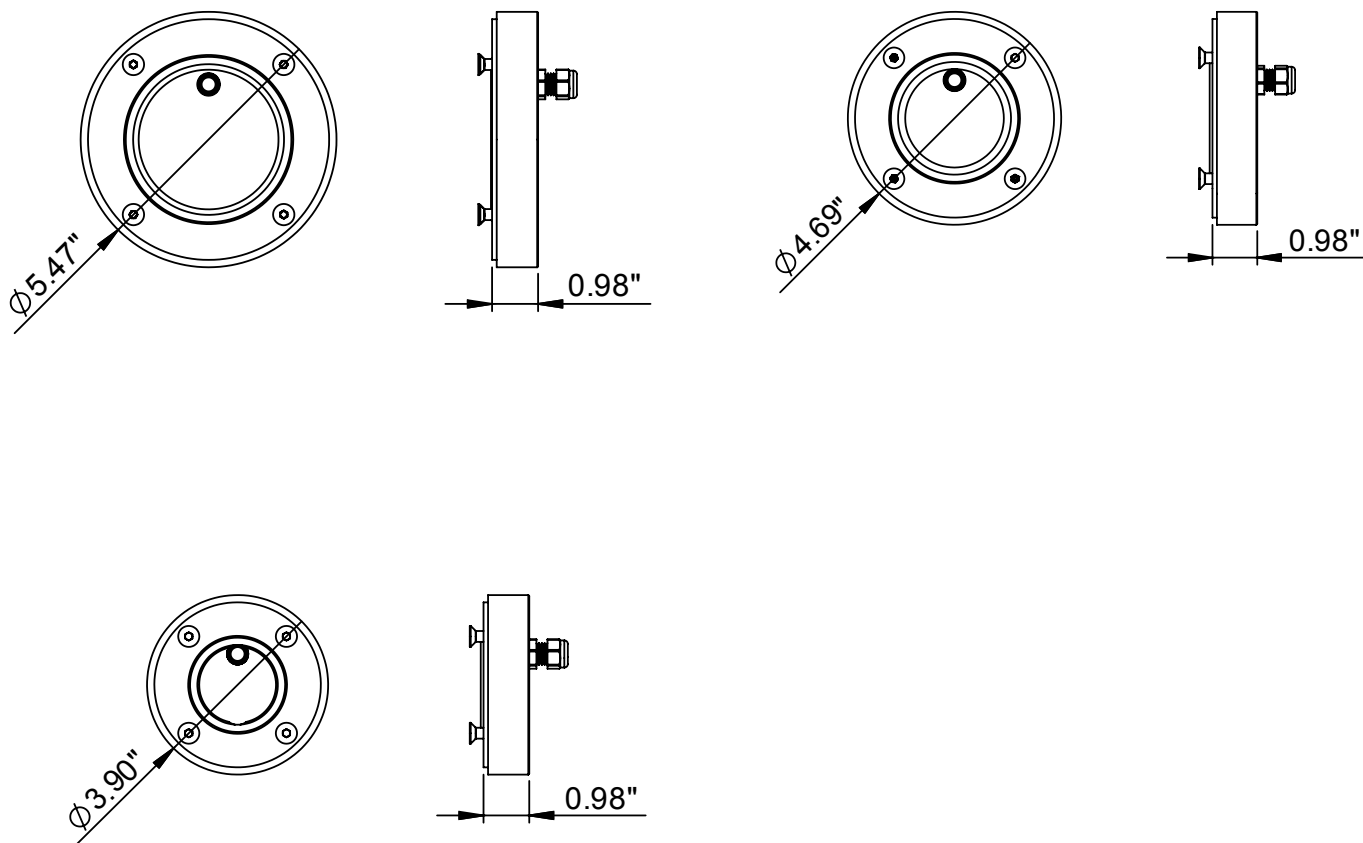
Note:

- ***Do not overtighten the screws as this can result in underwater pool light or niche damage.***

TECHNICAL SPECIFICATIONS



Material	Stainless steel (SAE316L)
Dimensions	Ø3.90" x 0.98" (LWMN 0640)
	Ø4.69" x 0.98" (LWMN 1280)
	Ø5.47" x 0.98" (LWMN 36240)
Weight	3.1 lbs (LWMN 0640)
	4.2 lbs (LWMN 1280)
	5.3 lbs (LWMN 36240)



Design and specifications subject to change without notice.

ASTEL d.o.o., Dutovlje 138, 6221 Dutovlje, Slovenia

Tel: +386 5 7310771, +386 5 7310772

Fax: +386 5 7310789

E-mail: info@astel-lighting.com

Web: www.astel-lighting.com